

DATA CENTER Crash Cart

The all-in-one mobile toolkit for diagnosing and resolving data center emergencies.



Our Mission

PHS West is a relationship focused organization providing innovative products for a safe and efficient workplace.



There is an incredible sense of community at PHS West. Sure, the work is interesting too, but it's the supportive, family-like atmosphere that makes me look forward to coming to work.

Jared Alexander
CAD DESIGNER



Data Center Crash Cart

The PHS West Data Center Crash Cart is your front line defense against downtime. Bring the fix directly to critical IT infrastructure by housing all of your necessary tools and equipment into a portable command center.



BOOST EFFICIENCY

Eliminate wasted trips and time spent searching for tools. By minimizing unnecessary movement, streamlining tool access, and facilitating a smooth on-site workflow, data center crash carts significantly enhance the efficiency of technician work.



Data Center Crash Cart

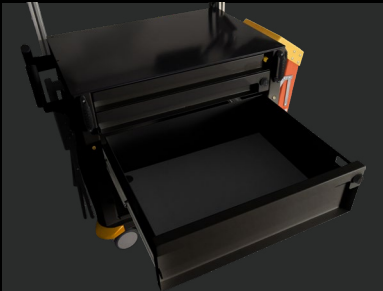
UPGRADE YOUR DATA CENTER RESPONSE

Crash carts are the ultimate field medic for your critical infrastructure. Here is how they help keep your systems healthy and downtime at bay.



Strike at the Source

Bring a complete toolkit with you for on-the-spot troubleshooting. Avoid wasting trips back and forth, fast-track repairs, and minimize downtime.



Organized Arsenal

Stay organized and readily accessible with designated compartments for your laptop, tools, and equipment. Lockable drawers safeguard sensitive data.



ESD Safe

The PHS West data center crash cart has a surface resistance of $<1 \times 10^9 \Omega$ (ohms).*



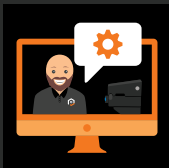
Spacious Workspace

The pull-out work surface ensures there is ample space for maintenance tasks.



HOLISTIC CUSTOMER FOCUS

PHS West will be here to help you, your team, and your key decision makers however we can through the duration of your purchasing process.



VIRTUAL SHOWROOM

Collaborate with our knowledgeable team at a time and location convenient for you. Schedule a virtual meeting to participate in live demonstrations and receive valuable training.

*Testing was conducted according to ANSI/ESD S20.20-2021 using a 19290 DESCO Digital Surface Resistance Meter.



6704 Bleck Drive, Rockford, MN 55373



763-498-7576 | 1-888-639-5438



www.phswest.com