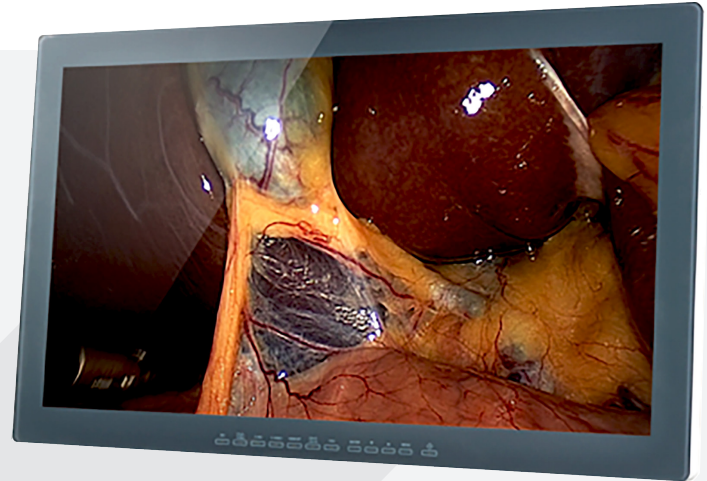


MEDICAL GRADE FHD Surgical Monitors

Enhanced surgical displays providing surgeons with the highest of quality.



Our Mission

PHS West, Inc. is a relationship focused organization providing innovative products for a safe and efficient workplace.



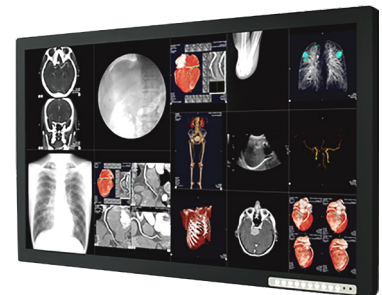
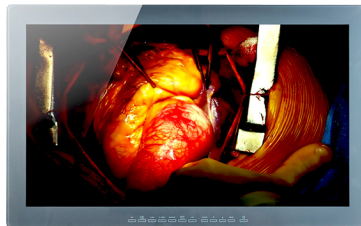
Unique challenges require unique solutions; we provide just that. Using a collaborative, relationship-focused approach has given us a comprehensive understanding of our customer's needs and how we can best meet them.

Kari Davis
INSIDE SALES REPRESENTATIVE



FHD Surgical Display Monitors

The full HD surgical display monitor provides surgeons with high definition, color accurate, high contrast visualization designed to enhanced edge delineation. Improve depth perception and enhance decision making confidence. Experience clear, crisp, realistic images.



BENEFITS

Our surgical displays are built for near patient use and equipped with surgical-field attributes to ensure safe and reliable operation. These displays are designed to provide surgeons color accurate, life-like images to enhance real time decision making.

CUSTOMIZATION

The PHS West, Inc. team takes a holistic customer focus and approach referencing the whole customer process from beginning to end, not just a sale. Our HD monitors, when paired with the Featherweight® Endoscopy workstation, allow your team to maintain your high quality working standards. Our Ergo-Express® power drive system give your team the freedom of just one person transporting equipment without a push or pull injury risk. Talk to our team today for more information!

FHD Surgical Monitors

FEATURES

These standard features are what set our surgical display monitors apart.



FEATURES

Double sided AR

Expanded Color LUT

UL/EN 60601-1 and International Certifications

Vent and Fan Free

Ingress Protection and Disinfection

Universal Connectivity

Cover Guard

QuickConnect Power Management

Internal 5V DC



SPECIFICATIONS

TYPE

IPS

RESOLUTION

1920 (H) x 1080 (V)

ACTIVE SCREEN SIZE (inch)

26"

DISPLAY AREA (mm)

576 (H) x 324 (V)

PIXEL PITCH (mm)

0.3 (H) x 0.3 (V)

VIEWING ANGLE (degree)

178 (H) / 178 (V)

RESPONSE TIME (time)

18 GTG (typ.)

BRIGHTNESS (cd/m2)

450 (typ.)

CONTRAST RATIO

1400:1 (typ.)

COLOR GAMUT

DISPLAY COLORS

1073M (10 bit)



6704 Bleck Drive, Rockford, MN 55373



763-498-7576 | 1-888-639-5438



www.phswest.com