

# PHS WEST INC.

Featherweight® Endoscopy  
Workstations

*Innovation Designed Around You*





## OUR PROMISE

“PHS West, Inc. will take the time and make the effort to ensure that the perfect cart is designed for your specific needs. From the design to ordering and delivery, complete satisfaction with your cart is our number one goal.”

-Kathleen Croaker, *Inside Sales Representative*

“The customer service I received from PHS West, Inc. far exceeded my expectations. The amount of time and effort they invested guaranteed our project’s success and is something I will never hesitate to pass along to my professional peers!”

-*Department Manager*

### Featherweight® Endoscopy Carts

*Innovation Designed Around You*

Endoscopy cart design has historically been one cart one design, prior to PHS West, Inc. entering the market with the Featherweight® Endoscopy Cart line. Our modular cart design allows you to design the perfect cart for your specific application.

#### What We Need From You:

List of required equipment  
Preferred style of cart  
Vital accessories  
Essential storage

#### What You Get From Us:

Allow us to take it from here and create the perfect Featherweight® Endoscopy Cart to meet your specific application.

The following pages will guide you through this simple process.

## ABOUT US

In response to nurses' specific needs, PHS West, Inc. developed the Featherweight® line of custom, modular endoscopy carts. Our carts are now recognized as the best system for hospitals and GI centers around the world.



### **List of Required Equipment**

- Light Source
- Processor
- Cautery
- Etc.

### **Preferred Style of Cart**

- Procedure Room
- Travel
- Double
- Single
- Etc.

### **Vital Accessories**

- Scope Holder
- Outlet Strips
- Keyboard Tray
- Monitor
- Etc.

### **Essential Storage**

- Locking Drawer
- Tilt Bins
- Drawer Dividers
- Etc.

# Identify Your Cart

1

## Procedure Room Carts

*Innovation Designed Around You*

### I. Featherweight® Double Endoscopy Cart

Designed to fit all of your equipment and supplies on one cart, allowing everything to be located where it needs to be for convenient access during a procedure for all involved staff.

### II. Featherweight® Single Short Endoscopy Cart

When the requirement is for something small, simple, and/or cost effective, our Featherweight® Single Short Endoscopy Cart fits the need.

### III. Featherweight® Single Tower Endoscopy Cart

If your requirement for a small footprint necessitates a Single Short but the available area for your equipment and/or supplies do not fit, the Featherweight® Single Tower Endoscopy Cart gives you the vertical space needed.

\*Visit our endoscopy cart page [www.phswest.com/products/endoscopy-carts/](http://www.phswest.com/products/endoscopy-carts/) and select the appropriate tab for image galleries depicting additional options, layouts, and designs.



# Travel Carts

*Innovation Designed Around You*

## I. Featherweight® SPECS™ Motorized Endoscopy Cart

### *Specific Procedure Endoscopy Cart System*

Endoscopy suites and centers today, more than ever, need to be ever mindful of efficiency, space utilization, and time. The Featherweight® SPECS™ Motorized Endoscopy Cart acutely addresses all three of these needs. With smaller footprints in cramped patient rooms versus one large footprint, you can now bring only the supplies you need for each specific procedure. Your equipment can be separated from supplies, allowing for easier access during procedures, and, when needed, you can keep your supplies out of the room in isolation patient cases.

## II. Featherweight® Motorized Double Endoscopy Cart

As the mainstay of our motorized travel carts, the Featherweight® Motorized Double Endoscopy Cart has everything you need and nothing you don't. Accommodate all necessary equipment and supplies in one cart, for any travel requirement, in one trip.

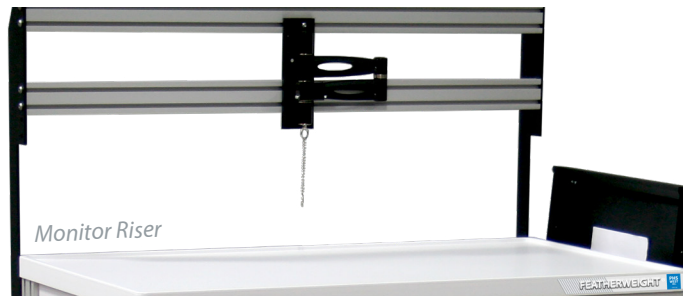
## III. Featherweight® Double Endoscopy Cart

In scenarios where travel is not far, or the supplies and equipment are minimal, the Featherweight® Double Endoscopy Cart is the perfect cart for the application.

\*Visit our endoscopy cart page [www.phswest.com/products/endoscopy-carts/](http://www.phswest.com/products/endoscopy-carts/) and select the appropriate tab for image galleries depicting additional options, layouts, and designs.



## Select Your Monitor Arm or Cart



2

What type of monitor arm or cart works best for you?

Breakaway Monitor Cart

Monitor Arm (Options)

Monitor Stand

Monitor Riser

\*Visit our endoscopy cart page [www.phswest.com/products/endoscopy-carts/](http://www.phswest.com/products/endoscopy-carts/) and select the appropriate tab for image galleries depicting additional options, layouts, and designs.

## Choose Your Accessories

3

HD LCD Procedure Monitor



CPU Mount



Tank Holder



Keyboard Tray with Mouse Surface



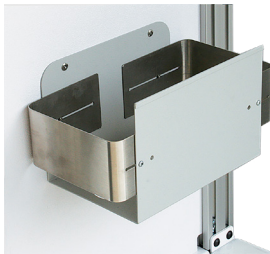
Scope Holder



Wire Basket



Foot Pedal Holder



Flip Up Work Surface



What type of accessories do you need?

**Keyboard Trays**

*Fold-up | Slide-out*

**Scope Holder**

*Fold-up | Slide-out*

**Tank Holder**

*CO2 | Argon | O2*

**Procedure Monitor**

*Medical Grade | HD | LCD*

**CPU Mount**

**Foot Pedal Holder**

**Flip Up Work Surface**

**Wire Basket**

\*Visit our endoscopy cart page [www.phswest.com/products/endoscopy-carts/](http://www.phswest.com/products/endoscopy-carts/) and select the appropriate tab for image galleries depicting additional options, layouts, and designs.

# Pick Your Storage

4

Vertical Supply Cabinet



Tilt Bins



Locking Drawer Cabinet



Keyless Lock



Drawer Dividers



What kind of storage options are necessary for your endoscopy cart?

## Locking Drawer Cabinet

(3) 4" | (2) 6" | (1) 8" and (1) 4" | (1) 12"

## Keyless Lock

Available for all drawer and cabinet combinations

## Drawer Dividers

For either 4" or 6" Drawers

## Tilt Bins

Single Row of 4 | Double Row of 4 | Single Row of 5 | Double Row of 5  
Single Row of 4 and Single Row of 5

## Vertical Supply Cabinet

## Keyless Lock

1 Box | 3 Box Horizontal | 3 Box Vertical

\*Visit our endoscopy cart page [www.phswest.com/products/endoscopy-carts/](http://www.phswest.com/products/endoscopy-carts/) and select the appropriate tab for image galleries depicting additional options, layouts, and designs.